

DOOR WEDGE TOOL INSTRUCTIONS

SEES-DWT-005

NOTE: FOR USE BY ELEVATOR INSPECTORS AND TRAINED ELEVATOR MAINTENANCE AND REPAIR PERSONNEL ONLY.

Description

The standard door wedge tool SEES-DWT-005 fits most doors. It blocks unlocked hoistway doors fully open or nearly closed.

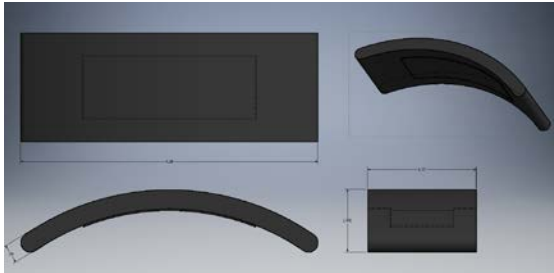


Figure 1: SEES-DWT-005

Benefits

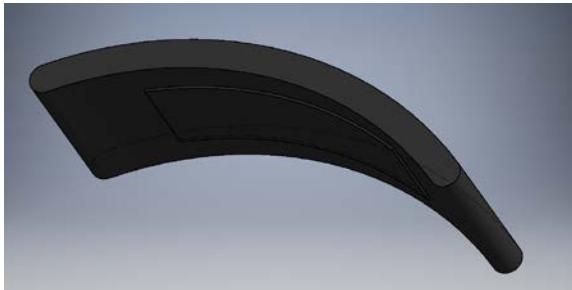


Figure 2: SEES-DWT-005 Features

- A. Lightweight rubber and spring steel construction
- B. Fits all sill groove widths
- C. Quick installation

The door wedge tool can be used on single-slide, center-opening, or two-speed hoistway door systems. The tool creates a wedge in the door sill preventing the door from closing.

Instructions

WARNING: This tool may wear or become damaged. Inspect your door wedge tool before and after each use and replace it if it is worn, bent, or damaged.

1. Door Wedge Tool At Door's Leading Edge

1. Position door at location desired.
2. Flex door wedge tool to a flat position. See Fig 3
3. Insert tool into door sill.
4. Allow tool to flex and return to original position.
5. Test door security by attempting to slide door. See Figure 4.

2. Door Wedge Tool For Center-Parting

1. Position door at location desired.
2. Flex door wedge tool to a flat position. See Fig 3
3. Insert tool into door sill.
4. Allow tool to flex and return to original position.
5. Test door security by attempting to slide door. See Figure 5.



Figure 3: Flex SEES-DWT-005 flat for insertion

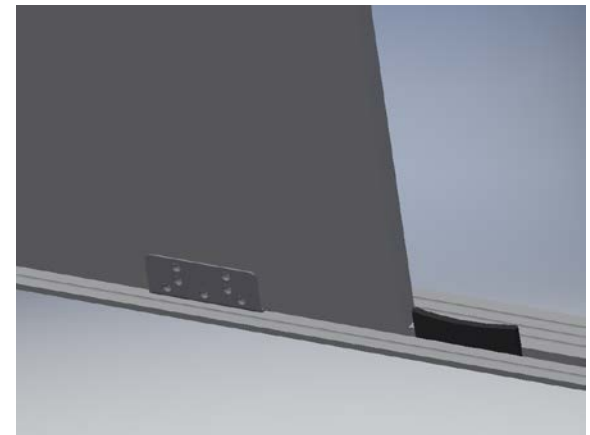


Figure 4. Single-Slide and 2-Speed Door Applicaton

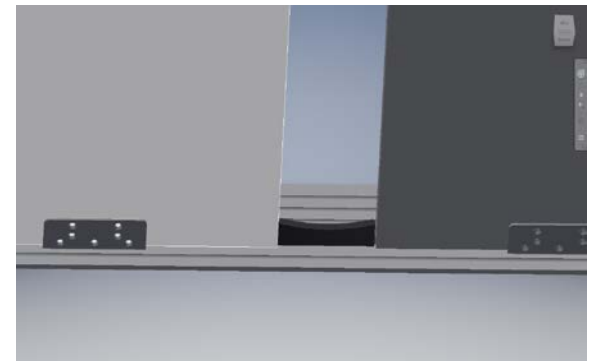


Figure 5. Center-Opening Door Applicaton