

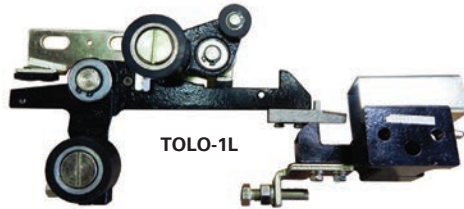
# TOSHIBA

# QUICK LOCATOR GUIDE

<b>Door Parts</b> .....	876
Door Lock Assembly .....	876
Locks .....	876
<b>Fan</b> .....	876
<b>Printed Circuit Boards</b> .....	876
<b>Wheels and Rollers</b> .....	877
Hanger Rollers .....	877
Hanger Assemblies .....	877
Door Vane Roller .....	877

TOSHIBA

## Door Parts



TOLO-1L

S.E.E.S. #	Description
TOLO-1L	Door Lock Assembly, Toshiba



TOLO-3

S.E.E.S. #	Description
TOLO-3	Lock, for Door
TOLO-4	Lock, Triangular



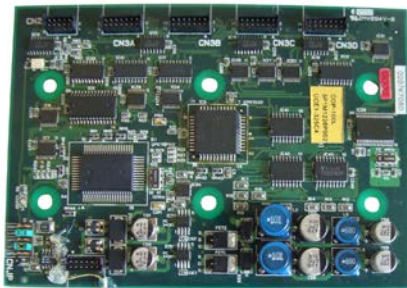
TOLO-4



TOF-1

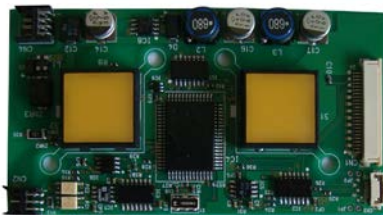
S.E.E.S. #	Description
TOF-1	Fan, FV140 115V, 220V

## Printed Circuit Boards



TOPCB-5

S.E.E.S. #	Description
TOPCB-5	PCB, COP-100L COP For CV180, CV190
TOPCB-8	PCB, HIB-100A SP1M1235-C UCE1-326C3 HOP For CV 180, 5P1M1212P001C
TOPCB-14	PCB, LED-100B For CV180, UCE12-84A2



TOPCB-8

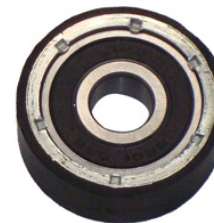


TOPCB-14

## Rollers and Hanger Assemblies

### Rollers

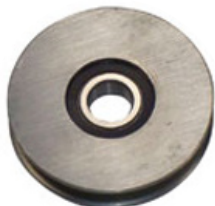
S.E.E.S. #	Description
TODV-1	Roller, for CV100, CV190 Door Vane 40mm O.D. x 14mm W, ID:12mm, bearing 6201
TOHR-1	Roller, for Hanger 60mm O.D. x 16mm W, ID:17mm, bearing 6203Z
TOHR-2	Roller, for Hanger 72mm O.D. x 15mm W, ID:15mm, groove dia 64.5mm, bearing 6202
TOHR-3	Roller, for Hanger 60mm O.D. x 12mm W, ID: 10mm, groove dia 44mm, bearing 6200RZ
TOHR-4	Roller, for Hanger 56mm O.D. x 14mm W, ID:12, groove dia 49mm, bearing 6201
TOHR-5	Roller, for Hanger with Eccentric 60mm O.D. x 16mm W, groove dia 52mm, bearing 6203
TOHR-6	Roller, for Hanger Plastic 75mm O.D. x 18mm W, ID:12mm, groove dia 68mm, bearing 6201
TOHR-7	Roller, for Hanger 62mm O.D. x 16mm W, ID:17, groove dia 53mm, bearing 6203
TOHR-8	Roller, Retaining for Hanger 30mm O.D. x 9mm W, 6g-M10
TOLO-1W	Roller, for CV55, CV60 Door Lock 40mm O.D. x 20mm W, ID:18mm
TOLO-2	Roller, for CV100, CV190 Door Lock 40mm O.D. x 14mm W, ID:12, bearing 6201
TOWH-3	Roller, for Hanger Plastic 73mm O.D. x 11mm W, ID:10, bearing 6200
TOWH-4	Roller Assembly, for Hanger Plastic Unit 73mm O.D. x 11mm W



TODV-1



TOHR-1



TOHR-2



TOHR-3



TOHR-4



TOHR-5



TOHR-6



TOHR-7



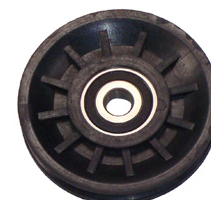
TOHR-8



TOLO-1W



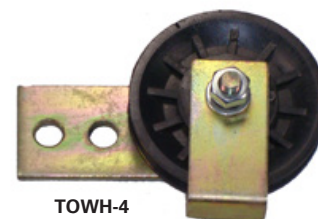
TOLO-2



TOWH-3

### Hanger Assemblies

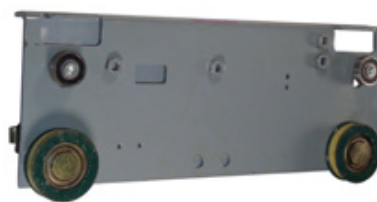
S.E.E.S. #	Description
TODH-1	Hanger Assembly, for CV100-190 Landing Door
TODH-2	Hanger Assembly, for CV100-190 Landing Door with Screw



TOWH-4



TODH-1



TODH-2





**No Maintenance!  
No Repairs!  
No Call Backs!**

---

*No field modifications needed.  
All mounting hardware included.*

## DO IT RIGHT THE FIRST TIME

"THE REQUIREMENTS FOR DOOR RESTRICTORS WAS IMPLEMENTED TO PREVENT PASSENGERS FROM FALLING INTO AN OPEN HOISTWAY UNDERNEATH THE ELEVATOR PLATFORM WHILE TRYING TO EVACUATE FROM AN ELEVATOR THAT IS STUCK BETWEEN FLOORS."

-AMERICAN SOCIETY OF MECHANICAL ENGINEERS

## ELECTRICAL vs. MECHANICAL

Requires electric power & battery back up at all times.	<b>vs.</b>	Works even when power is out.
Coils burn up from continuous use.	<b>vs.</b>	Plastic edging protects wires & cables.
Functionality affected by severe temperatures (hot or cold).	<b>vs.</b>	Works in all types of weather conditions.
Required maintenance on plunger, battery, or PC Boards.	<b>vs.</b>	Maintenance Free!
Many false entrapments & call backs.	<b>vs.</b>	No Call Backs!
High Product Costs.	<b>vs.</b>	Lowest cost solution.

### SEES RESTRICTOR: THE PREFERRED MECHANICAL DOOR RESTRICTOR



PART# SEES-RESTRICTOR-003  
(FLAG SMALL ADJUSTABLE 1.25"-2")

PART# SEES-RESTRICTOR-004  
(FLAG LARGE ADJUSTABLE 2"-2.875")



PART# SEES-RESTRICTOR-005  
(SHIM KIT w/ HARDWARE)



PART# SEES-RESTRICTOR-006  
(FLAG FIXED 1" LENGTH)



PART# SEES-RESTRICTOR-007  
(FLAG FIXED 3" LENGTH)



SEES-DWT-001  
SEES DOOR  
WEDGE TOOL

*Always Smooth Sailing*

