

HITACHI

QUICK LOCATOR GUIDE

Car Signal Components	670
Pushbutton Assemblies	670
Door Parts	670
Contacts	670
Door Locks	670
Door Slider	670
Door Vane	670
Encoder	671
Guide Shoe Assemblies	671
Inserts	671
Roller for Guide Shoe	671
Magnetic Sensor	672
Printed Circuit Boards	672
Switches	672
Limit Switches	672
Wheels and Rollers	671
Guide Shoe Rollers	671
Hanger Assemblies	671
Hanger Rollers	671
Wheel for Door Lock	671

Pushbuttons



HIBT-1



HIBT-2



HIBT-4



HIBT-1-ARROW-DOWN



HIBT-1-ARROW-UP



HIBT-9



HIBT-13

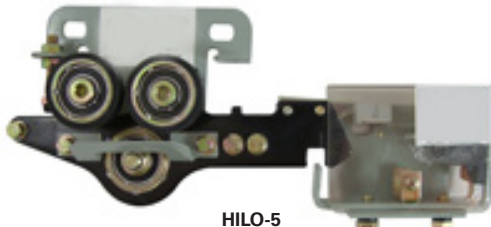
S.E.E.S. #
Description

HIBT-1	Pushbutton, RL-1 (3 Lines)
HIBT-2	Pushbutton, RL-1 (4 Lines)
HIBT-4	Pushbutton, SL-TC, Specify Marking
HIBT-4-ARROW	Pushbutton, SL-TC, Marked Arrow
HIBT-7	Pushbutton, DL-PO2 for NPX
HIBT-8	Pushbutton, RL-MA with Light
HIBT-9	Pushbutton, AK2026
HIBT-10	Pushbutton, AL-POE
HIBT-11	Pushbutton, for RL-1
HIBT-12	Pushbutton, for SL-TC
HIBT-13	Pushbutton, EL-PO
HIBT-1-ARROW-DOWN	Pushbutton, RI-1 (3 Lines) Marked Arrow DOWN
HIBT-1-ARROW-UP	Pushbutton, RI-1 (3 Lines) Marked Arrow UP

Door Parts



HILO-2



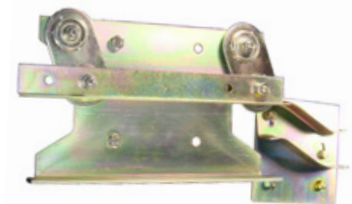
HILO-5



HILO-8



HILO-15



HIDV-1

S.E.E.S. #
Description

HILO-2	Landing Door Triangular Lock with Key
HILO-5	Door Lock HY-GR
HILO-6A	Side Door Lock, TKB-1A
HILO-6B	Side Door Lock, TKB-1B
HILO-8	Contact for Door Lock
HILO-9	Base Floor Lock
HILO-11	Door Lock, DK-RSL
HILO-12	Door Lock, DK-RN4
HILO-13	Door Lock for Goods Lift
HILO-14	HY07 Side Contact Switch
HILO-15	COP Lock
HIDV-1	Door Vane (SET)

Rollers

S.E.E.S. #	O.E.M. #	Description
HIW-3		Roller , Hanger, 130mm x 30m with 15mm I.D. Double 6202
HIHR-1		Roller , Hanger 65mm x 13mm, bearing 6202RS GD:60 ID:15mm
HIHR-3		Roller , Retainer for Hanger Assembly 33mm x 10mm 6g-M10
HIHR-6		Roller , Freight Lift Hanger 70mm x 20mm GD:64 6204 ID:20mm
HILO-3		Wheel , for Door Lock 45mm x 15mm ID:12mm
HIDH-1L		Hanger Assembly , Landing Door (SET)
HICOD-4	TS5208N122	Encoder , 100-1024C/T-C2-12V 78
HIDS-1		Door Slider
HIDV-2		Roller , Door Vane 45mm x 15mm ID:12mm



HIHR-1



HIHR-3



HIHR-6



HILO-3



HIDH-1L



HICOD-4



HIDS-1



HIDV-2

Guide Shoes

S.E.E.S. #	Description
HIGS-1	Guide Shoe Insert , Set of 3, 120mm x 22mm x 16mm
HIGS-2	Guide Shoe Insert , 124/120mm x 28mm x 10mm
HIGS-6	Guide Shoe , 16mm
HIGS-7	Guide Shoe , 10mm
HIGS-8	Guide Shoe , 16mm
HIGS-12	Guide Shoe , 125mm x 10/16mm
HIGS-13	Roller for Guide Shoe , 160mm x 30mm x 2mm, bearing 6004 ID:20mm
HIGS-14	Guide Shoe Insert , 65mm x 24mm x 17mm
HYGS-1	Guide Shoe , Hyundai, 120mm x 22mm x 6mm



HIGS-1



HIGS-2



HIGS-6



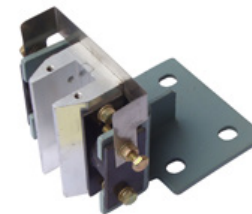
HIGS-7



HIGS-14



HIGS-13



HIGS-12



HIGS-8

Switches



HISW-13



HISW-14



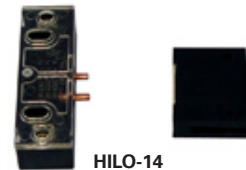
HISW-1A



HISW-1B



HISW-3



HILO-14

S.E.E.S. #	O.E.M. #	Description
HISW-13		Limit Switch, LX22
HISW-14		Limit Switch, LX Hand-reset
HISW-1A	TKB-1A	Switch, Normally Open, Double Wheel, 110 VDC, 0.378A
HISW-1B	TKB-1A	Switch, Normally Closed, Double Wheel, 110 VDC, 0.378A
HISW-3		Limit Switch, 220V, 10amp
HILO-14		Switch, HY07 Side Contact

Printed Circuit Boards

S.E.E.S. #	Description
HIPCB-10	PCB, MTB-HLNF VMFG Well Serial Board, YSD-E00014-001-A, 32297963-2
HISS-2	Sensor, YG-3 Magnetic



HIPCB-10



HISS-2