

FUJITEC

QUICK LOCATOR GUIDE

Door Parts	608
Contacts	608
Door Gib	608
Door Lock Assemblies	608
Guide Shoe Insert	608
Door Motor	608
Escalator Parts	608
Handrail Chain	608
Reversing Chain	608
Keys	609
Push Button	608
Wheels / Rollers	609
Contacts	609
Door Gib	609
Door Lock Assemblies	609

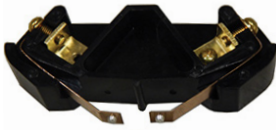
Door Parts



FJDS-1



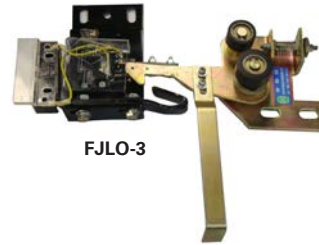
FJGS-4



FJLO-2D



FJLO-2



FJLO-3



FUJ-067



FUJ-074

S.E.E.S. #	O.E.M. #	Description
FJDS-1		Door Gib, Plastic Slider
FJGS-4		Guide Shoe Insert, Set of three, (1) 120mm x 28mm x 6mm, (2) 120mm x 24mm x 9mm
FJLO-2	5245AN2	Door Lock Assembly
FJLO-2C	D35092001	Contact, for FJLO-2
FJLO-2D	FJLO-2D	Fujitec Interlock, Contact Blade Assembly
FJLO-3	5245AD3	Door Lock Assembly
FUJ-067	D46149004	Door key (D46149004)
FUJ-074		Contact, Upper Interlock Bridge used on 5245AH box only

Door Motor



FUJ-077

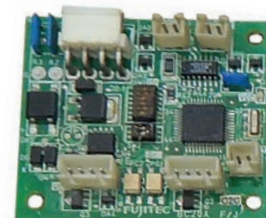
S.E.E.S. #	O.E.M. #	Description
FJDM-001		Door Motor, MS7126/B0.25kw

Escalator

S.E.E.S. #	O.E.M. #	Description
FUJ-077	D62451001	Escalator Handrail Chain, #60, 178 Pitch
FJCH-1		Reversing Chain Pitch Line, 60 Width: 34 Length

Push Button

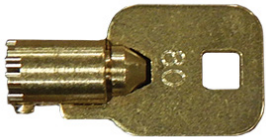
S.E.E.S. #	Description
FJBT-PCB-001	Hall Push Button PCB
FJBT-2-BLANK	Ultra Thin Button, Blank, HSA6000A
FPB-PCB-001	PCB, Pushbutton Board



FPB-PCB-001

Keys

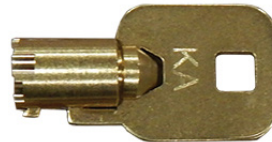
S.E.E.S. #	Description
FUJK-001	Key, #80 Tubular
FUJK-002	Key, #81 Tubular
FUJK-003	Key, KA Tubular
FUJK-004	Key, KB Tubular
FUJK-005	Key, KC Tubular



FUJK-001



FUJK-002



FUJK-003



FUJK-005

Wheels/Rollers

S.E.E.S. #	O.E.M. #	Description
FJFP-1		Handrail Drive Wheel, Dim O.D. 440 mm x 35 mm
FJHR-1		Roller, Hanger, 68mm O.D. x 14mm W, bearing 6202
FJLO-5		Wheel, for Door Lock, 38mm O.D. x 16mm W, ID:14mm
FJLO-6		Wheel, for Door Lock, 30mm O.D. x 16mm W, ID:14mm
FJWH-5		Handrail Roller, Nylon with Aluminum, Black, 70 mm x 50mm, 620
FUJ-072	D00403001	Door Hanger Roller, 78mm x 17mm
FUJ-078		Door Hanger Roller, 75mm x 70mm x 20mm I.D. (6004 Brg)
FJGS-4		Guide Shoe Insert 3pcs One 120*28*6, 78mm x 17mm Two 120*24*9
FJGS-4		Guide Shoe Insert 3pcs One 120*28*6, 78mm x 17mm Two 120*24*9



FJFP-1



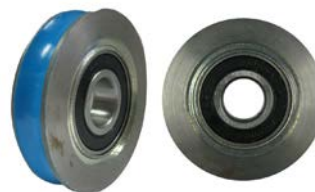
FJHR-1



FJLO-5



FJLO-6



FUJ-072

The ENFORCER[®]

Door Gibs. Redefined.

SAFETY FIRST... BUILT TO LAST

PATENT PENDING

CAN HANDLE OVER 18,000 lb OF FORCE!



SEES-ENFORCER-001

7/16"



SEES-ENFORCER-002

15/32"



SEES-ENFORCER-003

1/2"



SEES-ENFORCER-004

17/32"

SAFETY: Limits liability due to door failure | **DURABILITY:** Less call backs, reduce door damage | **SAVINGS:** Reduce service calls with fewer gib replacement/door alignment.



@SEESinc



SEESinc.com/blogs

Always Smooth Sailing



SOUTHERN ELEVATOR
& ELECTRIC SUPPLY

2781 West McNab Rd., Pompano Beach, FL 33069 • 800-526-0026 • www.SEESinc.com