



SEES HOME ELEVATOR



Welcome



SHE makes your life easier!

A home elevator is the easiest way to move between floors, especially when you are carrying extra weight like luggage or groceries. If you use a wheelchair or a walker, a home elevator can give you the freedom to safely access any floor, improving your in-home mobility and dramatically enhancing your quality of life.



SHE uses space efficiently

SEES Home Elevators are compact so you can make the most out of the space in your home. In fact, S.H.E. uses far less space than a staircase. S.H.E. can be designed in a new construction or added during a renovation.



SHE is a sound investment

Adding a SEES Home Elevator to your home will significantly increase your home's resale value and expand its marketability. This increase in your home's value will often exceed the cost of the elevator.

Why a SEES Home Elevator?

Contact us:

By Phone:
800.526.0026
954.971.1115

By Fax:
954.917.7337

By Mail:
2781 W. McNab Rd.
Pompano Beach, FL 33069



About SEES:

SEES Inc. is a family-owned and operated elevator parts company dedicated to moving elevators around the world, from skyscrapers to home residences. Over the last thirty-seven years, SEES has earned the reputation of being the company that offers the best solutions to any and all demands in the industry. We now extend our trademark innovation and superior quality to the business of home elevators.

SEES Home Elevators are constructed with the finest materials at our Modernization Center in Fort Lauderdale, Florida. We offer a wide range of options and features at very competitive prices, to enhance your home and elevate your lifestyle. Call us today for a quote. We look forward to hearing from you.

Always Smooth Sailing

S.H.E. FEATURES



01 Machine RoomLess Elevator means no wasted space for equipment

02 Smooth ride counter-weighted traction elevator

03 Quiet chain drive uses no hydraulic oil

04 More efficient with VVVF Drive

05 LED lighting is standard

06 Car Operating Panel with Emergency Light and Phone

What is a Machine RoomLess Elevator?

S.E.E.S. Home Elevators are Machine RoomLess. This means that there is no need for an underground hydraulic cylinder or a machine room because the small, gearless machine that lifts and lowers the cab, fits within the hoistway overhead. This design is made possible by technological advancements which have allowed for a reduction in the size of electric motors. This system is made even more efficient by the use of traction equipment for counter-balancing the cab. This all translates into amazing energy savings, estimated at 70-80% when compared to hydraulic elevators. On top of this, MRL elevators are superior in performance and ride quality, operating at faster speeds for added convenience.

07

Real Wood cab

08

Maximum allowable
950 lb. capacity is
standard

09

Maximum allowable
40 feet per minute
is standard

10

Made in the USA

S.H.E. IS A 10

Class • Beauty • Style

S.H.E.'s got it all!

**DON'T SETTLE
FOR LESS**



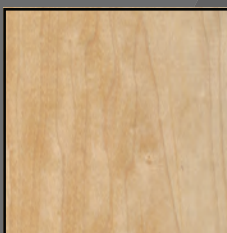


Customization

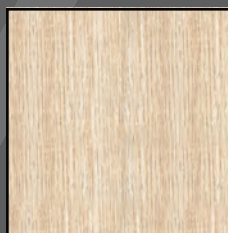
S.H.E. can be customized in a wide range of sizes and styles beyond what is featured in this booklet. SEES Manufacturing & Engineering utilizes a talented staff to design processes and products for any space and to meet virtually any need. Whether it be a decorative light fixture or a customized handrail, SEES will work with you to bring your vision to life.

Walls

Almost any type of wood is available and can be used for S.H.E. construction. Most cars are made using hardwoods and veneers in one of the standard wood types seen below. For on-site, custom finishing, cars can be delivered with unfinished surfaces.



Maple (standard)



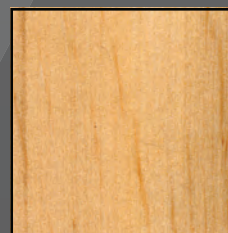
Light Oak (standard)



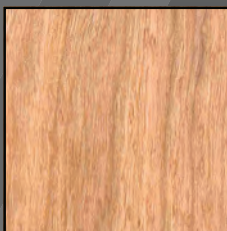
Medium Oak (premium)



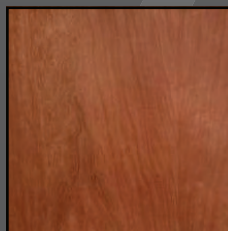
Dark Oak (premium)



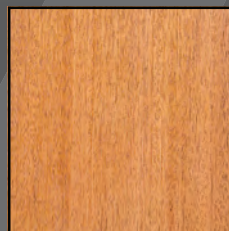
Clear Alder (premium)



Cherry (premium)



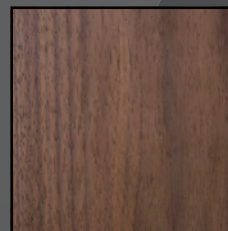
Stained Cherry (premium)



Mahogany (premium)



Stained Mahogany (premium)



Walnut (premium)

Single Speed Car Sills

S.H.E. Sills feature sleek extruded aluminum and can be customized for your home elevator.



Clear



Bronze



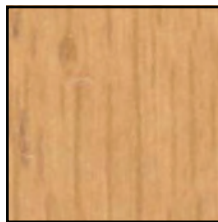
Gold

Floor

S.H.E. floors are made with hardwood laminate finishes. Elevators can also be ordered with unfinished wood.



Maple (laminated)



Natural Oak (laminated)



Cherry (laminated)



Walnut (laminated)



Unfinished Oak (laminated)

LED Cab Lighting

Every elevator comes with four LED lights in the color of your choosing.

STANDARD: 6" Down Light with Glass Lens



Black



White



Gold



Silver





Gates

S.E.E.S Home Elevators come with a collapsible gate. Accordion fold gate is an option. Automatic gate operators are also an option. Our accordion gates are available in natural hardwood, vinyl laminate, acrylic or aluminum panels. All hardwood and vinyl laminates are laminated to a 1/4" medium density fiberboard core. Natural hardwood is sealed with a protective clear lacquer or can be left unfinished per customer request.



All SEES Home Elevators come with the SEEScreen Electronic Door Detector, designed to ensure maximum passenger safety. The SEEScreen's 94 infrared beams act as an invisible safety curtain across the door entrance. When an obstacle breaks the screen, the sensors detect it and immediately stop the elevator to avoid any accidents.

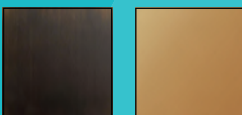
Collapsible Gates



Standard Metal Finishes



Silver Brass



Oil-Rubbed Bronze Bronze

Accordion Gates



Accordion Fold Gate Frames



Nickel Brass (premium) Bronze White (premium)

Standard Hardwood Finishes



Maple/Birch Oak Cherry Mahogany Walnut

Standard Vinyl Laminates



Maple/Birch Light Oak Dark Oak Cherry

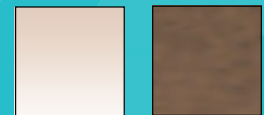


Mahogany Walnut White Antique White



Chalk Beige Black

Hinges



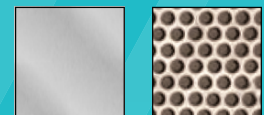
Bright Nickel Bronze

Acrylic Vision Panels



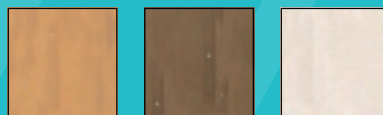
Clear Bronze (tint)

Aluminum



Brushed Aluminum Perforated Aluminum

Panel Connectors



Light Brown Dark Brown Gray*

* Also available in hard-hinge connectors, Dark Brown or Gray



Car Operating Stations

Each elevator includes a Car Operating Panel. The faceplate will vary depending on finish selected and the number of elevator landings. A Remote Call Station is placed on each landing by the elevator door.



Car Operating Panel (MRL models only) – configuration determined by the elevator’s use requirements.



Remote Call Station (at each landing) available in matching finishes to Car Operating Panel – for interior use only.



Standard Finishes



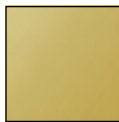
Brushed Stainless



Polished Stainless



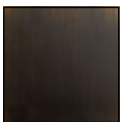
Brushed Brass



Polished Brass



Bronze



Oil-Rubbed Bronze



White (Remote Call Station only)



Black (Remote Call Station only)

Regardless of metallic finish selected, top & bottom end caps and buttons are brushed stainless.

RELAX & ENJOY



Made in the **U.S.A.**



Handrails

Standard flat wood handrails are finished to match walls. Optional round metal handrails are available in various finishes.



Stainless Steel Polished



Stainless Steel Brushed



Brass



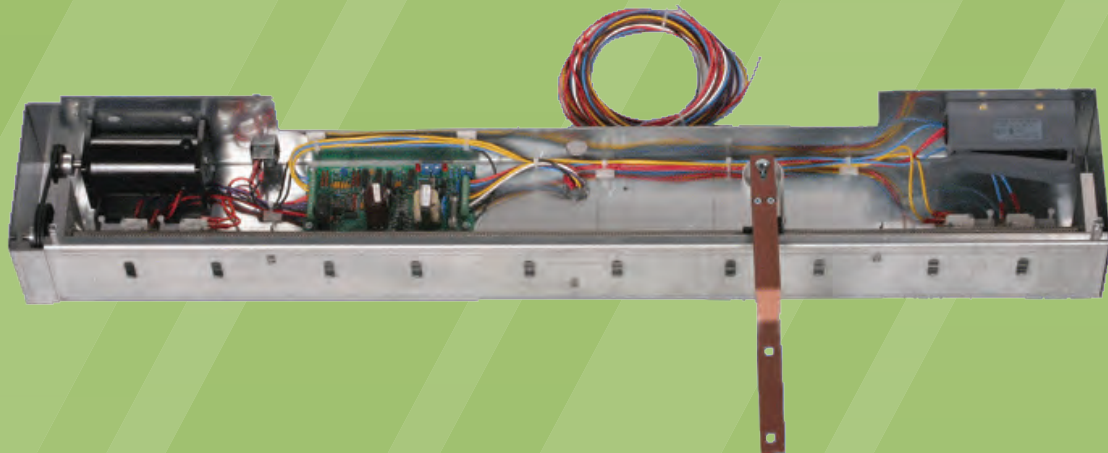
Bronze



Actual colors may vary slightly from printed samples.

Power Gate Operator

Porta's KIS100 Power Gate Operator is a proven product that provides a user-friendly, dependable and cost effective means of automating accordion gates used in residential and L.U.L.A. Elevators. It has passed an accelerated life test of 25 years of normal residential uses (100,000 cycles). Custom designs and finishes are always available.



Power Gate Operator Features:

- Two-speed, bi-directional gate operation
- Accommodates a variety of control signals
- Auto-close option enabled via a user setting
- "Porta" GTS100 Gate Switch mounts within the chassis
- Micro-switch slow downs and limits
- Magnetic coupling of gate to operator

Electro-Mechanical Door Lock

The EMDL is a hoistway interlock developed and manufactured by Porta, Inc. With its stylish and slender design, this electro-mechanical locking device is strictly intended for residential applications. Conforms to ASME A17.1., certified to CSA STD B44 and has passed an accelerated life test of 25 years of normal residential use (100,000 cycles).

Features:

- Positive Acting Contacts (No micro-switches)
- Cost effective
- Mounts to a 2-5/8" setback
- Single-use template provided
- Optional accessories
- Template kit
- Emergency release key & finishing plug
- Dimensions 2 x 2 x 9



Gate Switch



Features:

- Designed for use in Residential Elevators
- Field Reversible for RH or LH
- Mounts from either the Top or Back
- Positive Acting Contacts
- Contacts Rated for 24vdc, 2A
- 3-3/4" Conduit Knock Outs provided
- Direct replacement for GAL Type "G"
- ETL Listed

RELAX





More Options:

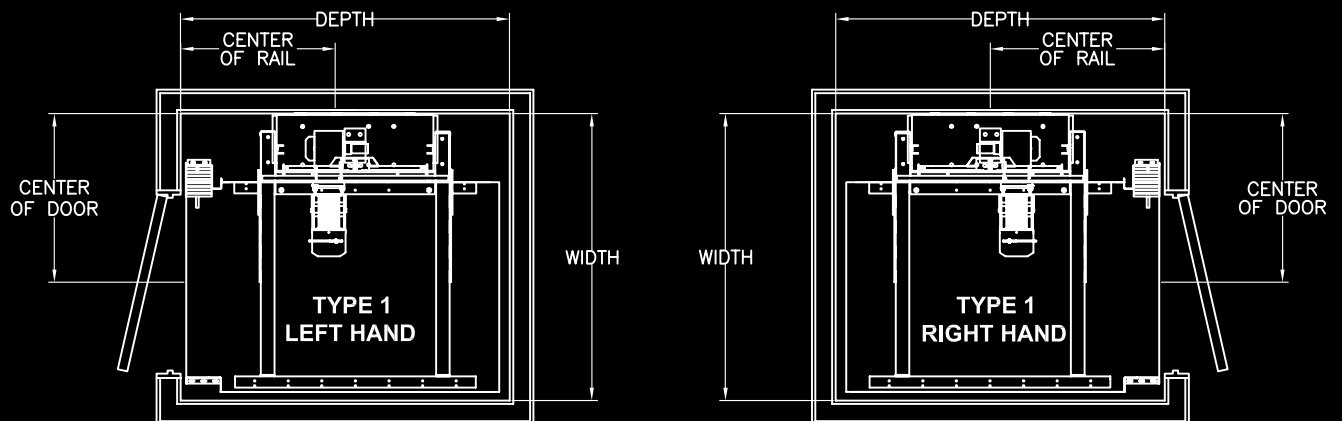
Cab Design:

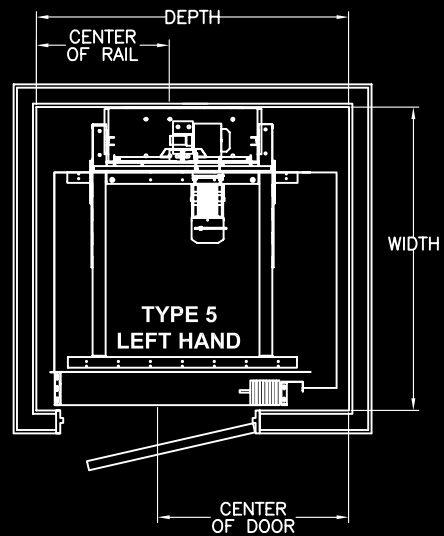
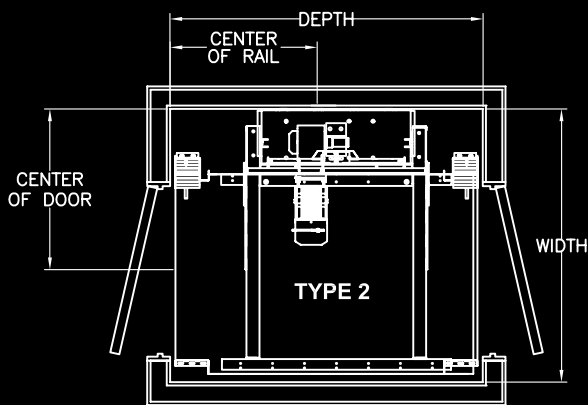
- Plain Unfinished
- Single Picture Frame
- 4 Picture Frame
- Inset 4 panel

Heights:

84"

94"





Contact us:

By Phone:
800.526.0026
954.971.1115

By Fax:
954.917.7337

By Mail:
2781 W. McNab Rd.
Pompano Beach, FL 33069



Always Smooth Sailing

Residential Elevator Quotation

Drive Type:

Project Status: Quotation Request Order



Customer Information

Date: _____ Cust. PO#: _____
Name: _____
Address: _____

Contact: _____
Phone #: _____
Fax #: _____
Email: _____

Project Information

Job Name: _____
Location: _____
Capacity: _____ lbs. Car Travel: _____' - _____"
Speed: _____ fpm Pit Depth: _____' - _____"
Power: _____ V _____ ϕ _____ Hz. Clear O/H: _____' - _____"
Landings: _____ Cab Height: _____' - _____"
Hatch Openings: Front: _____ Rear: _____ Side: _____
Hatch Size: (W): _____' - _____" (D): _____' - _____"
Platform Size: (W): _____' - _____" (D): _____' - _____"

Cabs ("Classic" In-Line is Standard):

Classic Series:

- Type: In-Line Front & Rear Front & Side
- Ceiling: C-1 C-2 C-3 Other _____
- Other Options:
 - 7'-4" Clear Inside Cab Height 8'-0" (Nominal) 1/4" Laminated Safety Glass Insert in One (1) Wall
 - Brushed Brass Handrail Brushed Stainless Handrail Other (Specify) _____
- Color Selection _____

Car Doors (Vinyl-Laminate is Standard):

- Quantity: One (1) Two (2)
- Type: Vinyl-Laminate Vinyl-Laminate w/ (3) Vision Panels Other _____
 Alumifold Visifold w/ Clear or Bronze Frame
- Color Selection _____
- Automatic Car Door Operator: One (1) Two (2)

Control Fixtures (#4 St./St. Standard):

- Car: Brushed Stainless Steel Light Switch Key Switch _____ Qty.
 Brushed Brass Ephone Hands Free
- Hall: Brushed Stainless Steel Brushed Brass Key Switch _____ Qty.

Miscellaneous:

- Bottom Final Limit Switch Disconnect Switches (Motor & Car Light -Mounted & Wired)
- Pit Stop Switch Controller / Run Module
- Spring Buffers (Required if Pit Depth is Greater than 17") Temporary Run Pendant Station
- Hoistway Door Interlock Key(s) _____ Qty. _____

Southern Elevator & Electric Supply

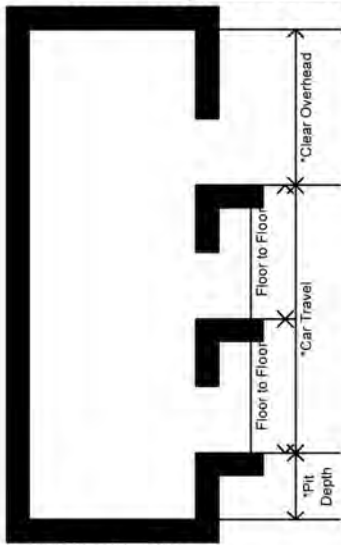
Address: 2781 West McNab Road Pompano Beach, Florida 33069
Toll Free: (888) 526-0026 • Phone: (954) 971-1115 • Fax: (954) 917-7337
Web: www.seesinc.com • Email: info@seesinc.com

* available only for Hydraulic Drive

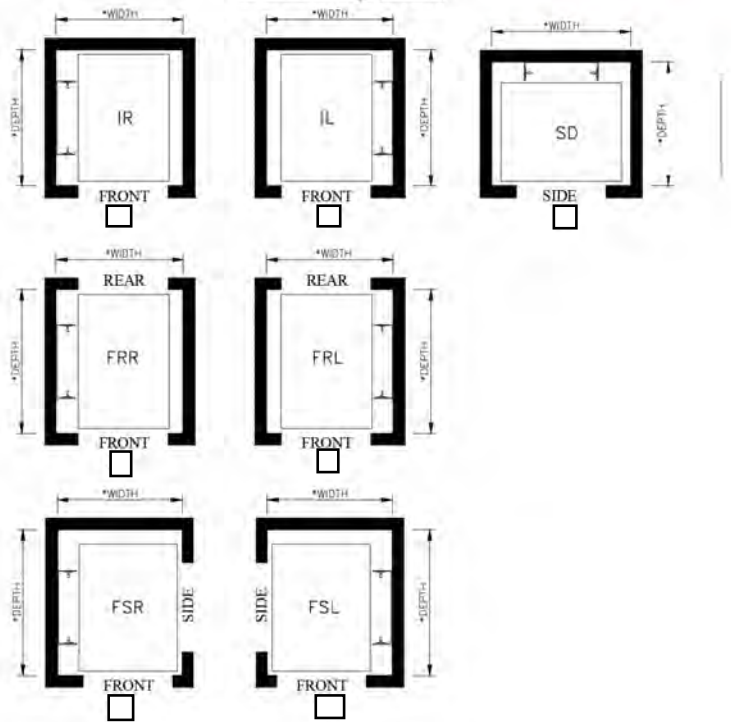
Residential Elevator Quotation



Hoistway Elevation



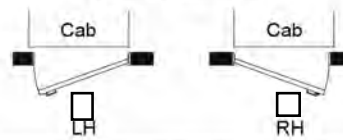
Hoistway Plan



Landing Location Chart

Floor	Front	Rear	Side
6			
5			
4			
3			
2			
1			

Door Swing



Floor to Floor Travel

1st to 2nd Flr. _____
 2nd to 3rd Flr. _____
 3rd to 4th Flr. _____
 4th to 5th Flr. _____
 5th to 6th Flr. _____

*NOTE: 24" Minimum for Floor Travel

Front Opening: Left Hand Right Hand
 Size: _____ W x _____ H
(3'-0" W Std.) (6'-8" H Std.)

Rear Opening: Left Hand Right Hand
 Size: _____ W x _____ H
(3'-0" W Std.) (6'-8" H Std.)

Side Opening: Left Hand Right Hand
 Size: _____ W x _____ H
(3'-0" W Std.) (6'-8" H Std.)

Shipping Information

Ship to: _____

Ship Via: Pick-up Carrier
 Terms: Pre-paid Collect 3rd Party

Contact Name: _____
 Contact Tel #: _____

(24hrs. notice before delivery will be indicated unless otherwise noted)

Additional Comments



@SEESinc



SEESinc.com/blogs



SEESinc

Always Smooth Sailing

2781 WEST McNAB ROAD, POMPANO BEACH, FL 33069 • 800-526-0026 • www.SEESinc.com

